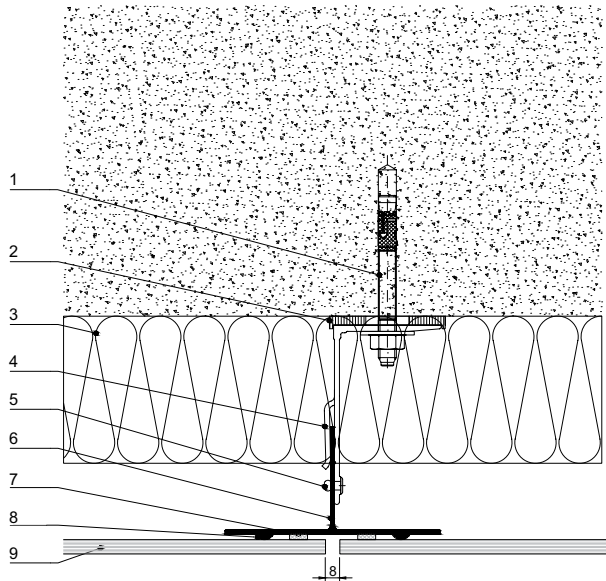




**VARIO GLUE**  
VENTILATED FAÇADE SYSTEM

**ETEM**

# VENTILATED FAÇADE SYSTEM DESIGNED FOR THE INSTALLATION OF FLAT FAÇADE MATERIALS WITH INVISIBLE FASTENING ELEMENTS.



## MAIN ADVANTAGES

Fast, easy and secure installation

High resistance to external environment conditions

Simplified constructional solution

Big possibilities for façade design

Possibility for using cladding materials with different thickness

Invisible fastening elements

# VARIO GLUE

VENTILATED FAÇADE SYSTEM

## DESIGN

DESIGNED ON THE PRINCIPLE OF NATURAL VENTILATION, ACHIEVED THROUGH THE CREATION OF A 4-8 CM GAP BETWEEN THE FAÇADE MATERIAL AND THE THERMAL INSULATION, THE SYSTEM FUNCTIONS WITH DIFFERENT PRODUCTS FOR ENSURING NECESSARY ADHESION.

## HIGH QUALITY PRODUCT

DEVELOPED TO ENSURE THE SAFE AND EFFICIENT INSTALLATION OF CLADDING MATERIALS TO THE BUILDING SUBSTRATE.

## SECURITY

THE SYSTEM ALLOWS THE MOVEMENT OF THE FAÇADE MATERIAL IN VARIOUS THERMAL EXPANSIONS, USING WIDE VARIETY OF PROFILES AND FIXING BRACKETS.

1. anchor
2. thermo pad
3. thermal insulation
4. fixing bracket 100/90 mm
5. rivet 4.8x12 mm
6. main supporting profile
7. double stick tape
8. glue
9. façade material
10. thermo pad
11. fixing bracket 100/160 mm
12. plug

## DETAILS

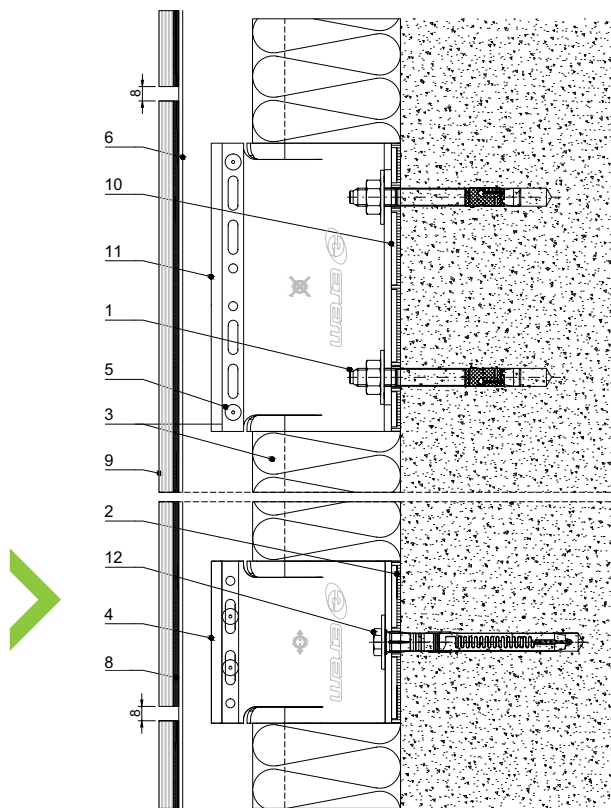
High strength of the mechanical bond

Excellent performance in high wind pressure

The system for gluing includes glue and double-stock mounting tape

High energy efficiency

Natural ventilation



[etem.com](http://etem.com)